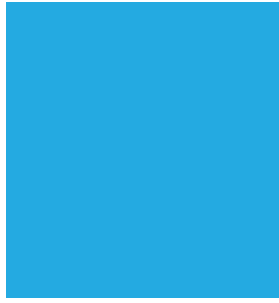




**ÇETSA**  
COSMETICS & CHEMICAL



PRODOCT CATALOG



# CETSA GROUP



As Cetsa group, we have been operating in the service sector for more than 20 years. Together with all our stakeholders and employees, we have aimed to deliver the best quality service to our valued customers in the most accurate way. We have grown together with our customers by setting new targets for ourselves every period. At the point we have reached today, we have reached the level we want regarding our corporate identity and we have focused on our R & D activities in order to become better.

In order to position ourselves in the most accurate way in the future, we have established many infrastructure systems in the software field, especially e-commerce systems. Our quality products with reasonable price policy not only in the cities that we serve all of Turkey and aimed to spread all over the world.

We know that; Every work done without sacrificing quality is directly proportional to success!

## KITCHEN CLEANING PRODUCTS

HAND DISHWASHING DETERGENT	6
HAND DISHWASHING DETERGENT PROFESSIONEL	6
HEAVY DUTY DEGREASER CLEANER	7
OVEN FRYER DEGREASER	7
STAINLESS STEEL POLISHER	8
PROTEIN REMOVER PRELIMINARY	8
PROCELAIN METAL SCRATCH REMOVER	9
INDUSTRIAL DISHWASHER DETERGENT	9
INDUSTRIAL DISHWASHER DETERGENT	10
INDUSTRIAL DISHWASHER RINSE	10
INDUSTRIAL DISHWASHER RINSE	11
INDUSTRIAL DISHWASHER LIMESCALE REMOVER	11

## GENERAL CLEANING PRODUCTS

ROOM SMELL	13
PERFUME SURFACE CLEANER	13
SURFACE CLEANER FOR VENDING MACHINES	14
WOOD FLOOR CLEANER	14
BATHROOM SHOWER TUB AND FAUCET CLEANER	15
WC & BATHROOM CLEANER DENSE	15
CREAM CLEANING DETERGENT	16
GLASS AND WINDOW CLEANER	16
MULTI-PURPOSE CLEANER	17
CARPET SHAMPOO FOAM	17
CARPET SHAMPOO WITHOUT FOAM	18
CARPET SHAMPOO DRY FOAM	18
LIME AND RUST REMOVER	19
STAIN REMOVER FOR CARPET	19
BLEACH	20
DENSE BLEACH	20

## PERSONEL CARE PRODUCTS

SHOWER GEL	22
CREAMY LIQUID HAND SOAP	22
FOAM LIQUID HAND SOAP	23
CREAMY HAIR SHAMPOO	23

## LAUNDRY CLEANING PRODUCTS

LIQUID LAUNDRY DETERGENT FOR COLOR WITH ENZYME	25
LIQUID LAUNDRY DETERGENT GENERAL USE WITH ENZYME	25
FABRIC SOFTNER	26
ROOM AND LAUNDRY PERFUME	26

## CAR CARE PRODUCT

BRUSHLESS CAR WASH	28
POLISHED BRUSHLESS CAR WASH	28

## MARKET PRODUCTS

LIQUID LAUNDRY DETERGENT	30
LIQUID LAUNDRY DETERGENT	30
FABRIC SOFTENER	30
GENERAL CLEANER	30
GLASS AND WINDOW SURFACE CLEANER	31
BATHROOM SHOWER TUB AND FAUCET CLEANER	31
OVEN AND GRILL CLEANER	31
DEGREASER CLEANER	31
WC & BATHROOM CLEANER DENSE	32
DISHWASHING	32
ALL PURPOSE CLEANER	32
ULTRA BLEACH	32

# KITCHEN CLEANING PRODUCTS





## HAND DISHWASHING DETERGENT

### Properties:

- It shows the highest performance in a small amount of use.
- A perfect balance between efficient cleaning and economy includes.
- It is suitable for skin pH.
- It is Fragrant.

Volume (L)	20	10	5	5
Weight (kg)	20,42	10,21	5,105	5,105
Pcs-Box	1	1	4	2
Product Code				
Lemon Scents	KC-101-TL-20	KC-101-TL-10	KC-101-TL-05*4	KC-101-TL-05*2
Pomegranate Scents	KC-101-TP-20	KC-101-TP-10	KC-101-TP-05*4	KC-101-TP-05*2
Grape Scents	KC-101-TG-20	KC-101-TG-10	KC-101-TG-05*4	KC-101-TG-05*2
Apple Scents	KC-101-TA-20	KC-101-TA-10	KC-101-TA-05*4	KC-101-TA-05*2



## HAND DISHWASHING DETERGENT PROFESSIONEL

### Properties:

- It is a foamy hand dishwashing detergent.
- It is a product with high active substance content, even a small amount of it can wash the dishes enough for cleaning.
- Protects hands and softness thanks to its enriched formula. gives.
- Suitable for skin pH
- It is Fragrant.

Volume (L)	20	10	5	5
Weight (kg)	20,42	10,21	5,105	5,105
Pcs-Box	1	1	4	2
Product Code				
Lemon Scents	KC-101-PL-20	KC-101-PL-10	KC-101-PL-05*4	KC-101-PL-05*2
Pomegranate Scents	KC-101-PP-20	KC-101-PP-10	KC-101-PP-05*4	KC-101-PP-05*2
Grape Scents	KC-101-PG-20	KC-101-PG-10	KC-101-PG-05*4	KC-101-PG-05*2
Apple Scents	KC-101-PA-20	KC-101-PA-10	KC-101-PA-05*4	KC-101-PA-05*2



## HEAVY DUTY DEGREASER CLEANER



### Properties:

- Burnt in kitchen equipment such as stove, oven, hood It is used for cleaning the stuck oil layers.
- It adheres perfectly to vertical surfaces.
- It penetrates deeply into the oily residue on the surface.
- It can be easily rinsed from the applied surface.
- Suitable for stainless steel surfaces.
- Does not damage kitchen equipment.

Volume (L)	5	5
Weight (kg)	5,285	5,285
Pcs-Box	4	2
Product Code	KC-102-5*4	KC-102-5*2



## OVEN FRYER DEGREASER

### Properties:

- Burnt and blackened over time in kitchen equipment It is an alkaline cleaner used for cleaning oil residues.
- Also suitable for stainless steel materials.
- It can be used with boiling and dipping methods.
- It can be easily rinsed from the applied surface.

Volume (L)	20	5	5
Weight (kg)	20,14	5,285	5,285
Pcs-Box	1	4	2
Product Code	KC-103-20	KC-103-5*4	KC-103-5*2



## STAINLESS STEEL POLISHER



### Properties:

- Ideal for polishing and maintaining stainless steel surfaces.
- It cares, polishes and protects in one step.
- Fingerprints, stains, color fluctuations, traces such as fog on the surface and removes stains quickly and easily.
- It polishes without scratching.
- The preservatives in it can prevent the surface from getting dirty again and leaving a trace. prevents its formation.
- It prevents oxidation and delays discoloration.

Volume (L)	5	5
Weight (kg)	5,285	5,285
Pcs-Box	4	2
Product Code	KC-104*4	KC-104*2



## PROTEIN REMOVER PRELIMINARY



### Properties:

- Sticky and dried tea, coffee, fruit on kitchen equipment It is used for cleaning water stains and starch residues.
- Safe on porcelain, glass, ceramic and stainless steel items. available.
- It has disinfecting properties thanks to the chlorine it contains.
- It can be used with dosing pump in industrial dishwashers.

Volume (L)	5	5
Weight (kg)	5,285	5,285
Pcs-Box	4	2
Product Code	KC-105*4	KC-105*2



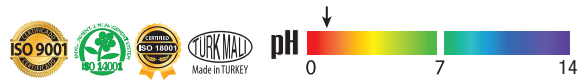
## PROCELAIN METAL SCRATCH REMOVER



### Properties:

- Do not use metal cutlery on porcelain plates, spoons the black scratches left on the porcelain cups. used for elimination.
- With the dipping method, these scratches are easily and completely removed.
- Porcelain gains a clean and new appearance.
- Absolutely no contact with stainless steel and other metal surfaces should not be carried.

Volume (L)	5	5
Weight (kg)	5,285	5,285
Pcs-Box	4	2
Product Code	KC-109*4	KC-109*2



## INDUSTRIAL DISHWASHER DETERGENT FOR HAİGH WATER

### Properties:

- Dissolves frozen oil and dirt thanks to the active substances it contains, It ensures the best cleaning of the dishes.
- Effective in hard and very hard waters.
- Prevents limescale accumulation.
- With dosing pumps connected to industrial dishwashers used

Volume (L)	20	10
Weight (kg)	22,28	11,14
Pcs-Box	1	1
Product Code	KC-106-G20	KC-106-G10





**INDUSTRIAL DISHWASHER DETERGENT**

**Properties:**

- Cleaning the dishes by removing the grease and dirt from the dishes. provides.
- Prevents limescale accumulation.
- With dosing pumps connected to industrial dishwashers used.
- It is suitable for use in soft and medium hard waters.

Volume (L)	20	10
Weight (kg)	22,28	11,14
Pcs-Box	1	1
Product Code	KC-106-P20	KC-106-P10

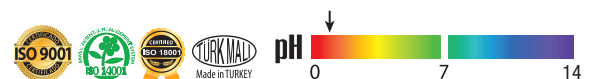


**INDUSTRIAL DISHWASHER RINSE FOR HIGH WATER**

**Properties:**

- For use in industrial dishwashers
- It is a high performance rinse aid designed for
- Superior rinsing in cases where the standard product is insufficient provides performance.
- When working with very hard, carbonated, silicate, salty waters can be used safely.
- It provides spotless drying of the washed dishes, especially glasses Ideal for washing machines.
- With dosing pumps connected to industrial dishwashers used.

Volume (L)	20	10
Weight (kg)	22,28	11,14
Pcs-Box	1	1
Product Code	KC-107-G20	KC-107-G10





## INDUSTRIAL DISHWASHER RINSE

### Properties:

- Thanks to the surfactants it contains, It allows the cleaned dishes to dry spotlessly.
- Drops and water stains by running water over the dishes, It prevents residue and provides shine on the dishes.
- With dosing pumps connected to industrial dishwashers used.

Volume (L)	20	10	5	5
Weight (kg)	20,16	10,08	5,04	5,04
Pcs-Box	1	1	4	2
Product Code	KC-107-P20	KC-107-P10	KC-107-P5*4	KC-107-P5*2



## INDUSTRIAL DISHWASHER LIMESCALE REMOVER

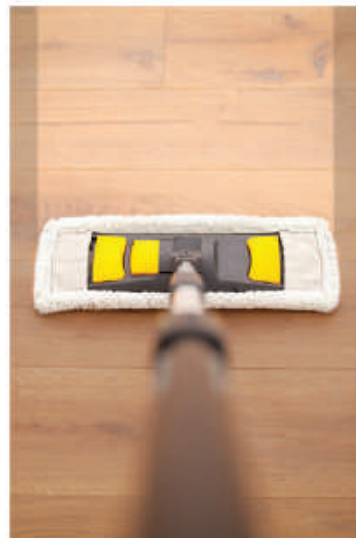
### Properties:

- Inner surfaces of dishwasher, tea kettle and bain-maries. It is used to clean lime deposits.
- Provides fast and effective cleaning with its superior formula.
- It is effective even at low dosage.
- It is also effective in cold water.

Volume (L)	5	5
Weight (kg)	5,14	5,14
Pcs-Box	4	2
Product Code	KC-108*4	KC-108*2



# GENERAL CLEANING PRODUCTS



## ROOM SMELL



### Properties:

- By spraying directly on textile surfaces applicable.
- It is used to remove irritating odors.
- It leaves a permanent, pleasant and fresh scent in the environments where it is applied.

Volume (L)	5	5
Weight (kg)	4,77	4,77
Pcs-Box	4	2
Product Code		
Lavander Scents	GC-302-LV5*4	GC-302-LV5*2
Chasmire Scents	GC-302-C5*4	GC-302-C5*2
Legend Scents	GC-302-LG5*4	GC-302-LG5*2
Spring Scents	GC-302-S5*4	GC-302-S5*2

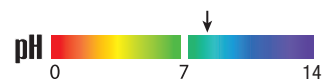


## PERFUME GENERAL SURFACE CLEANER

### Properties:

- In the cleaning of all washable and water-resistant surfaces it is effective.
- Provides hygiene on the applied surfaces.
- It provides hygiene in shower heads, especially in sanitary areas.
- It provides cleaning without leaving any traces.
- Economical use thanks to the automatic dilution apparatus provides.
- It is fragrant.

Volume (L)	20	10	5	5
Weight (kg)	19,88	9,94	4,97	4,97
Pcs-Box	1	1	4	2
Product Code				
Lavander	GC-301-L20	GC-301-L10	GC-301-L5*4	GC-301-L5*2
White Soap	GC-301-W20	GC-301-W10	GC-301-W5*4	GC-301-W5*2
Pure	GC-301-P20	GC-301-P10	GC-301-P5*4	GC-301-P5*2





**SURFACE CLEANER FOR VENDING MACHINES**

**Properties:**

- It is used for cleaning all water-resistant surfaces.
- It has effective cleaning power thanks to the active substances it contains.
- It is neutral.
- It can be used safely in vending machines due to its low foam.

Volume (L)	20	5	5
Weight (kg)	20	5	5
Pcs-Box	1	4	2
Product Code	GC-303-20	GC-303-5*4	GC-303-5*2



**WOOD FLOOR CLEANER**

**Properties:**

- For floors sensitive to water such as parquet and laminate. It is a cleaning and care product.
- Extends the life of floors.



Volume (L)	5	5
Weight (kg)	5	5
Pcs-Box	4	2
<b>Product Code</b>		
Lemon Scent	GC-305-L5*4	GC-305-L5*2
Floral Scent	GC-305-F5*4	GC-305-F5*2





## BATHROOM SHOWER TUB AND FAUCET CLEANER

### Properties:

- Lime residues in water and acid resistant sanitary areas. It is used in cleaning and provides a hygienic effect.
- It is fragrant.
- Daily cleaning of ceramic and plastic parts of toilet bowls provides outstanding success.

Volume (L)	20	5	5
Weight (kg)	20,5	5,225	5,225
Pcs-Box	1	4	2
Product Code	GC-310-20	GC-310-5*4	GC-310-5*2

### Scents:

- Floral



## WC & BATHROOM CLEANER DENSE

### Properties:

- It can be used in all WCs, urinals and bidets.
- For cleaning residues such as ureastone and lime with its dense consistency. it is effective.
- Designed for easy, fast, direct and safe application. It has a useful slant head.
- It has a profound effect; recesses and protrusions on surfaces. It reaches up to the surface and provides hygienic cleaning.

Volume (L)	20	5	5
Weight (kg)	20,5	5,225	5,225
Pcs-Box	1	4	2
Product Code	GC-309-20	GC-309-5*4	GC-309-5*2

### Scents:

- Pine



**CREAM CLEANING DETERGENT**



**Properties:**

- Water resistant including sanitary areas and food preparation areas. It is used for cleaning all surfaces.
- Effectively cleans surfaces thanks to the natural calcite it contains, dissolves stubborn dirt.
- It should be shaken before use.

Volume (L)	7
Weight (kg)	9,016
Pcs-Box	1
Product Code	GC-311



**GLASS AND WINDOW CLEANER**



**Properties:**

- It is used for cleaning glossy surfaces such as glass and mirrors.
- All finger formed on glossy surfaces indoors and outdoors. It removes traces, greasy dirt and nicotine film.
- It leaves a pleasant and fresh scent.

Volume (L)	5	5
Weight (kg)	4,965	4,965
Pcs-Box	4	2
Product Code	GC-304*4	GC-304*2

**Scents:**

- Pine





## MULTI-PURPOSE CLEANER

### Properties:

- It shows the highest performance in a small amount of use.
- A perfect balance between efficient cleaning and economy includes.
- It is suitable for skin pH.
- It is Fragrant.

Volume (L)	20	5	5
Weight (kg)	20,42	5,105	5,105
Pcs-Box	1	4	2
Product Code			
Lavander Scent	GC-314-L20	GC-314-L5*4	GC-314-L5*2
White Soap Scent	GC-314-W20	GC-314-W5*4	GC-314-W5*2
Pure Scent	GC-314-P20	GC-314-P5*4	GC-314-P5*2



## CARPET SHAMPOO FOAM

### Properties:

- All natural and synthetic products that can be cleaned with carpet shampoos used in carpets.
- Removes stubborn and ingrained dirt without leaving any residue cleans and delays contamination.
- It does not contain optical whitening and bleaching agents.
- All shampooing and spray extraction equipment suitable. It can also be used with textile pads.

Volume (L)	20	5	5
Weight (kg)	20,42	5,105	5,105
Pcs-Box	1	4	2
Product Code			
Lavander Scent	GC-315-L20	GC-315-L5*4	GC-315-L5*2
White Soap Scent	GC-315-W20	GC-315-W5*4	GC-315-W5*2
Pure Scent	GC-315-P20	GC-315-P5*4	GC-315-P5*2





**CARPET SHAMPOO WITHOUT FOAM**

**Properties:**

- All natural and synthetic products that can be cleaned with carpet shampoos used in carpets. The foam is controlled.
- Removes stubborn and ingrained dirt without leaving any residue. cleans and delays contamination.
- It does not contain optical whitening and bleaching agents.
- All shampooing and spray extraction equipmentsuitable. It can

Volume (L)	20	5	5
Weight (kg)	20,42	5,105	5,105
Pcs-Box	1	4	2
<b>Product Code</b>			
Lavander Scent	GC-316-L20	GC-316-L5*4	GC-316-L5*2
White Soap Scent	GC-316-W20	GC-316-W5*4	GC-316-W5*2
Pure Scent	GC-316-P20	GC-316-P5*4	GC-316-P5*2



**CARPET SHAMPOO DRY FOAM**

**Properties:**

- All natural and synthetic products that can be cleaned with carpet shampoos used in carpets.
- Removes stubborn and ingrained dirt without leaving any residue. Cleans and delays contamination.
- It does not contain optical whitening and bleaching agents.
- It is used with the machine.

Volume (L)	20	5	5
Weight (kg)	20,42	5,105	5,105
Pcs-Box	1	4	2
<b>Product Code</b>			
Lavander Scent	GC-317-L20	GC-317-L5*4	GC-317-L5*2
White Soap Scent	GC-317-W20	GC-317-W5*4	GC-317-W5*2
Pure Scent	GC-317-P20	GC-317-P5*4	GC-317-P5*2



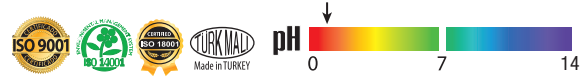


## LIME AND RUST REMOVER

### Properties:

- Lime residues in water and acid resistant sanitary areas It is used in cleaning and provides a hygienic effect.
- It is fragrant.
- Daily cleaning of ceramic and plastic parts of toilet bowls provides outstanding success.

Volume (L)	20	5	5
Weight (kg)	20,56	5,14	5,14
Pcs-Box	1	4	2
Product Code	GC-318-20	GC-318-5*4	GC-318-5*2



## STAIN REMOVER FOR CARPET

### Properties:

- Removal of stains on carpet and textile surfaces used.
- Water-soluble and insoluble stains from carpets, made of upholstery fabrics, natural and synthetic fibers Removes quickly and easily from textiles.
- It only takes a few minutes for it to take effect.

Volume (L)	20	5	5
Weight (kg)	20,5	5,225	5,225
Pcs-Box	1	4	2
Product Code	GC-319-20	GC-319-5*4	GC-319-5*2



### Scents:

- Special



**BLEACH**

**Properties:**

- Washing of white laundry at temperatures between 20-60°C and chlorine-based bleach auxiliary washing used for bleaching the item.
- Low cost thanks to its formula that provides effective stabilization. effective in doses.
- It does not create an unpleasant chlorine smell.
- Powerful dirt remover, bleach and high hygiene feature It is useful for cleaning and sanitizing heavily soiled surfaces.
- It should not be used with acidic products.

Volume (L)	20	10	5	5
Weight (kg)	20,76	10,38	5,19	5,19
Pcs-Box	1	1	4	2
Product Code	GC-312-20	GC-312-10	GC-312-5*4	GC-312-5*2

**Scents:**

- Mountain Brezee



**Scents:**

- Mountain Brezee

**DENSE BLEACH**

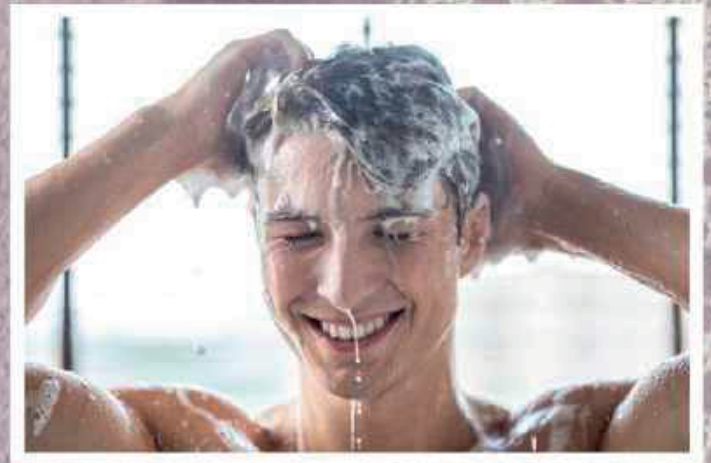
**Properties:**

- Provides hygiene on all water and alkali resistant surfaces.
- Mosaic with all fixtures in kitchen, bathroom and toilets, It can be used safely for cleaning ceramic, enamel and marble surfaces.
- All kinds of dirt and sun cosmetics caused by use. It easily removes the sticky dirt layers.
- It cleans the dirt settled in the joints.
- Thanks to its ultra-dense, thick consistency, it stays on vertical surfaces longer. clings, gives more effective results on dirt.
- To prevent bad odor by providing hygiene in the cleaned environment.obstacles.
- On heavily soiled surfaces thanks to its powerful dirt remover and bleaching feature.Provides cleanliness and hygiene.
- It should not be used with acidic products.

Volume (L)	20	10	5	5
Weight (kg)	20,9	10,45	5,225	5,225
Pcs-Box	1	1	4	2
Product Code	GC-313-20	GC-313-10	GC-313-5*4	GC-313-5*2



# PERSONEL CARE PRODUCTS





**SHOWER GEL**

**Properties:**

- Thanks to its soft formula, it cleans the skin without irritating, provides comfort.
- It is fragrant.
- Suitable for skin pH

Volume (L)	20	5	5
Weight (kg)	20,80	5,20	5,20
Pcs-Box	1	4	2
Product Code			
Chasmire Scent	PC-101-C20	PC-101-C5*4	PC-101-C5*2
White Soap Scent	PC-101-W20	PC-101-W5*4	PC-101-W5*2



**CREAMY LIQUID HAND SOAP**

**Properties:**

- It is economical and ideal for general usage areas.
- It is fragrant.
- Thanks to its soft formula, it cleans the skin without irritating it.
- It is suitable for skin pH.

Used with dispensers.

Volume (L)	20	5	5
Weight (kg)	20,58	5,145	5,145
Pcs-Box	1	4	2
Product Code			
Chasmire Scent	PC-102-C20	PC-102-C5*4	PC-102-C5*2
White Soap Scent	PC-102-W20	PC-102-W5*4	PC-102-W5*2





**FOAM LIQUID HAND SOAP**

**Properties:**

- It is economical with its abundant foam and saves water.
- Thanks to its soft formula, it cleans the skin without irritating it.
- It has a rich formulation that nourishes and protects the skin.
- It is suitable for skin pH.
- It is used with foam soap dispensers.

Volume (L)	20	5	5
Weight (kg)	20,10	5,025	5,025
Pcs-Box	1	4	2
<b>Product Code</b>			
Chasmire Scent	PC-103-C20	PC-103-C5*4	PC-103-C5*2
White Soap Scent	PC-103-W20	PC-103-W5*4	PC-103-W5*2



**CREAMY HAIR SHAMPOO**

**Properties:**

- It cleans the hair deeply, strengthens it and gives vitality to the hair gives.
- It has a pleasant smell and soft formula.
- Protects the scalp as it is suitable for skin pH

Volume (L)	20	5	5
Weight (kg)	20,80	5,20	5,20
Pcs-Box	1	4	2
<b>Product Code</b>			
Chasmire Scent	PC-104-C20	PC-104-C5*4	PC-104-C5*2
White Soap Scent	PC-104-W20	PC-104-W5*4	PC-104-W5*2

**Scents:**

- Chasmire
- White Soap





# LAUNDRY CLEANING PRODUCTS



## LIQUID LAUNDRY DETERGENT FOR COLOR WITH ENZYME



### Properties:

- It is a main washing detergent that does not contain bleach.
- It is not used for washing delicate textiles such as wool and silk.
- It is effective at any water temperature.
- It is used with liquid system dosing pumps and hand dosing.

Volume (L)	5	5
Weight (kg)	5,2	5,2
Pcs-Box	4	2
Product Code	LD-201-5*4	LD-201-5*2

### Scents:

- Floral



## LIQUID LAUNDRY DETERGENT GENERAL USE WITH ENZYME



### Properties:

- All kinds of cotton, synthetic and cotton-synthetic blends It is used for washing textiles. Contains enzyme.
- It is a main washing detergent that does not contain bleach.
- It can also be used safely in colored laundry.
- It is not used for washing delicate textiles such as wool and silk.
- It is effective at any water temperature.
- Used with liquid system dosing pumps.

Volume (L)	5	5
Weight (kg)	5,2	5,2
Pcs-Box	4	2
Product Code	LD-202-5*4	LD-202-5*2

### Scents:

- Floral



**FABRIC SOFTNER**



**Properties:**

- 1/3 of normal softeners due to its concentration until used.
- It gives softness to the laundry, prevents them from drying and It makes ironing easier, without getting wrinkled from the washing machine lets them out.
- Storage and cost savings thanks to its concentrated structure provides.

Volume (L)	5	5
Weight (kg)	5,2	5,2
Pcs-Box	4	2
Product Code	LD-203-5*4	LD-203-5*2

**Scents:**

- Mixed



**ROOM AND LAUNDRY PERFUME**



**Properties:**

- By spraying directly on textile surfaces applicable.
- It is used to remove irritating odors.
- It leaves a permanent, pleasant and fresh scent in the environments where it is applied.

Volume (L)	5	5
Weight (kg)	5	5
Pcs-Box	4	2
<b>Product Code</b>		
Lavander Scents	LD-204-LV5*4	LD-204-LV5*2
Chasmire Scents	LD-204-C5*4	LD-204-C5*2
Legend Scents	LD-204-LG5*4	LD-204-LG5*2
Spring Scents	LD-204-S5*4	LD-204-S5*2

**Scents:**

- Lavander
- Chasmire
- Legend
- Spring



# CAR CARE PRODUCTS





**BRUSHLESS CAR WASH**

**Properties:**

- It is suitable for cleaning all kinds of metallic and matte painted vehicles.
- With its Bol Foam, it provides a good cleaning and shine without scratching.
- Extends the life of your vehicle's paint.

Volume (L)	20	5	5
Weight (kg)	20	5	5
Pcs-Box	1	4	2
Product Code	CC-101-20	CC-101-5*4	CC-101-5*2



**POLISHED BRUSHLESS CAR WASH**

**Properties:**

- It cleans the dirt on the vehicle with its abundant foam without scratching it.
- By creating a film layer on the vehicle, it provides a more vivid and bright appearance.
- Extends the life of your vehicle's paint.

Volume (L)	20	5	5
Weight (kg)	20	5	5
Pcs-Box	1	4	2
Product Code	CC-102-20	CC-102-5*4	CC-102-5*2





# MARKET PRODUCTS



LIQUID LAUNDRY DETERGENT



Product Code : LD-202-2,5

LIQUID LAUNDRY DETERGENT



Product Code : LD-201-2,5

FABRIC SOFTENER



Product Code : LD-203-2

GENERAL CLEANER



Product Code : GC-301-1

## GLASS AND WINDOW SURFACE CLEANER



Product Code : GC-304-0,75

## BATHROOM SHOWER TUB AND FAUCET CLEANER



Product Code : GC-310-0,75

## OVEN AND GRILL CLEANER



Product Code : KC-103-0,75

## DEGREASER CLEANER



Product Code : KC-102-0,75

WC & BATHROOM CLEANER DENSE



Product Code : GC-309-0,75

DISHWASHING



Product Code : KC-101-G075

ALL PURPOSE CLEANER



Product Code : GC-314-1

ULTRA BLEACH



Product Code : GC-313-0,8



**ÇETSA KOZMETİK LTD. ŞTİ.**

Kırklareli Osb. 2. Cadde A Blok No:3 Kızılcıkdere/KIRKLARELİ

web: [www.cetsagroup.com](http://www.cetsagroup.com)

e-mail: [info@cetsagroup.com](mailto:info@cetsagroup.com)